

# WhereScape® automation for Teradata

## Deliver Teradata-Powered Analytics Fast

Leading companies around the world rely on modern data analytics and data warehousing software and solutions from Teradata to solve some of their toughest challenges. On any given business day in almost every industry around the globe, well over three million users benefit from a Teradata analytics environment or business application.

For IT teams, there's immense pressure to get valuable Teradata solutions into the hands of users as quickly as possible. Automating the development lifecycle lets IT teams do just that. With automation, IT teams can deliver new data infrastructure projects to the business at the speed of business.

WhereScape® automation for Teradata shortens the development lifecycle of Teradata data warehouses, data vaults, data lakes and data marts by 80 percent. From data infrastructure design and development to deployment and operation, WhereScape automation helps you get to production faster, with less cost and risk than traditional approaches.

---

*“WhereScape® RED was the only solution that would really let us take advantage of the massively parallel processing power of Teradata. And because it automated nearly everything, we could stretch every dollar in our budget.”*

— **Su Rayburn**, AVP of Information Management and Analytics, Delta Community Credit Union

## Accelerate time to value for Teradata projects

WhereScape automation fast-tracks the design, development, deployment and operation of Teradata data infrastructure projects including: data warehouses, data vaults, data lakes and data marts. With WhereScape, you can give business leaders the data they need fast, in days or weeks instead of months or years.

- Automates development and operations workflows with wizards and best practices built for Teradata.
- Leverages native objects (such as views, models, and join indexes) and unique Teradata features such as a multi-level partitioned primary index.
- Incorporates best practices for popular database methodologies such as 3NF, dimensional and Data Vault 2.0.
- Enables continuous integration and delivery to easily incorporate changes as business demands evolve.

## Boost developer productivity

Eliminate 95 percent of hand-coding and improve developer productivity fivefold by automating manual, repetitive tasks throughout the Teradata development lifecycle. With WhereScape, developers can rapidly and easily incorporate changes as business demands evolve, taking advantage of continuous integration and delivery of Teradata-based data infrastructure projects.

- Generates Teradata-optimized SQL code and Teradata Parallel Transporter (TPT) scripts automatically.
- Creates technical and business-level documentation as you work, removing the burden from development teams and providing auditability for future reference.
- Automates and schedules operational tasks for your Teradata data infrastructure.

## Collaborate effectively with the business

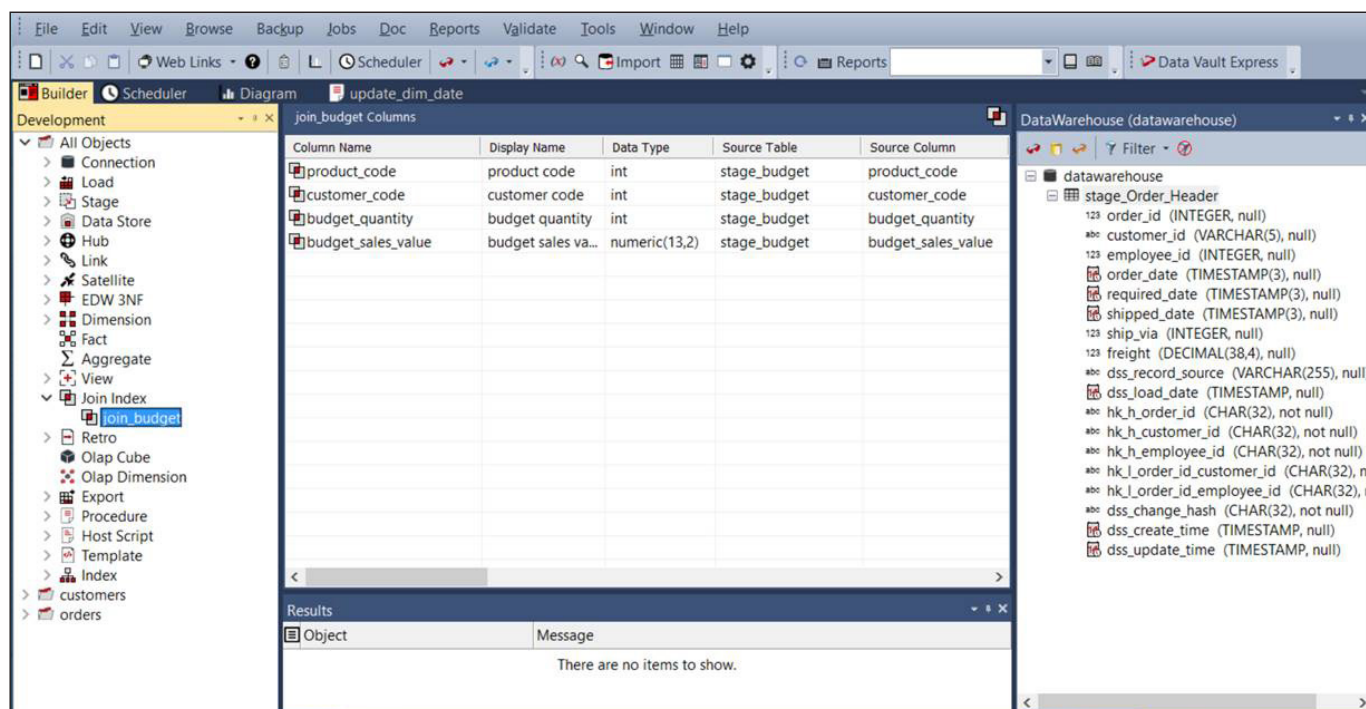
Use WhereScape-supported iterative design and development to collaborate with business users and ensure delivery of impactful analytics projects to the organization sooner. WhereScape's planning, design and rapid prototyping tools help your team close the gap between business need and technical capability early within a project, reducing risk and speeding up time to value.

- Provides iterative design capabilities so you can show concepts to business users, collaborate on new ideas and build better solutions.
- Supports rapid prototyping to gather feedback early, reduce project risk and deliver greater business value.
- Enables you to test prototypes with real data as you refine designs based on feedback from business users.

### WhereScape automation for Teradata includes:

- **WhereScape® 3D for Teradata**
- **WhereScape® RED for Teradata**
- **WhereScape® Data Vault Express™ for Teradata**

Use WhereScape 3D for Teradata to smartly tackle the upfront planning, design and prototyping associated with data warehouses, data lakes and data marts. Then rapidly develop, deploy and operate your Teradata data infrastructure with the automation of WhereScape RED for Teradata. Want to create a data vault? With WhereScape Data Vault Express for Teradata, 2.0 compliant data vaults can be a practical reality.



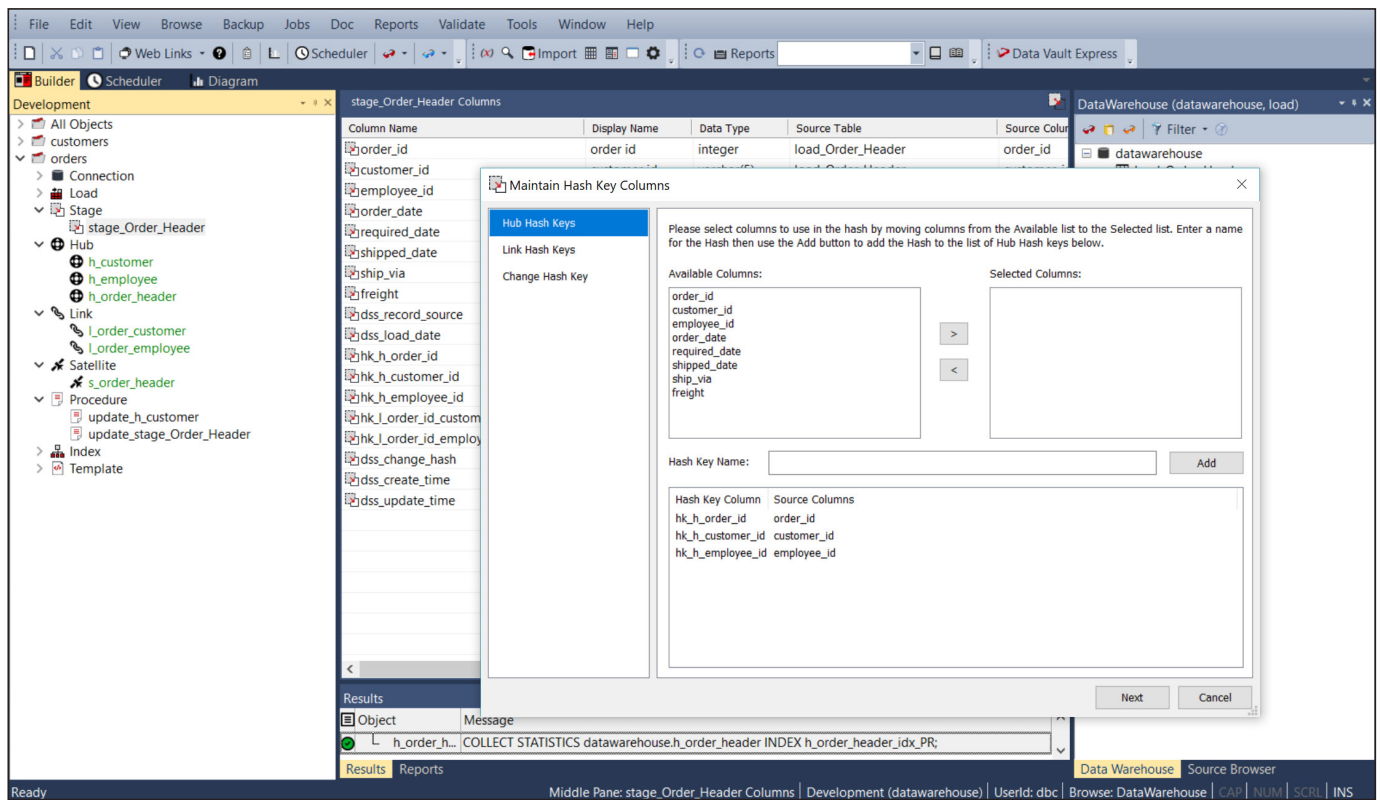
*WhereScape RED for Teradata includes built-in support for native Teradata objects such as Join Indexes.*

## WhereScape 3D for Teradata capabilities

- Sophisticated data discovery and profiling capabilities to explore and automatically document data source systems
- Automated building, testing and revising of data models using profiling data
- Target schema design and prototyping

## WhereScape RED for Teradata capabilities

- Automated workflows for drag-and-drop data infrastructure definition, automatic management of metadata, and scheduling and deployment to production
- Automatic generation of Teradata-native code to boost performance, eliminate inconsistencies and shorten learning curves
- Metadata, Teradata-specific wizards, and best practices are used to automatically generate native Teradata views, models, and more
- Built-in best practices for common database methodologies such as third-normal form (3NF), dimensional, and Data Vault 2.0
- Automatic creation and updating of documentation as you work, including data lineage, track back, and track forward
- Source system impact assessment on existing data infrastructure
- One integrated automation toolset
- Integrated scheduling option
- Optional streaming capabilities provide the flexibility to leverage real-time data in addition to batch-based data sources



*With WhereScape Data Vault Express, you can quickly and easily build Data Vault 2.0-compliant models, and include the hash key columns and code to populate them.*

## WhereScape Data Vault Express for Teradata capabilities

- Creates all hubs, satellites and links automatically from metadata models
- Generates hash keys and change keys
- Manages all metadata attributes automatically, including load date and record source
- Automatically generates all code required to instantiate and populate the data vault
- Produces full documentation for ultimate transparency and ongoing management ease
- Optional streaming capabilities provide the flexibility to leverage real-time data in addition to batch-based data sources

WhereScape is a Teradata Select Software Partner, ensuring WhereScape access to Teradata software and beta programs, product roadmaps and technology reviews.

### About WhereScape

WhereScape helps IT organizations of all sizes leverage automation to design, develop, deploy, and operate data infrastructure faster. More than 700 customers worldwide rely on WhereScape automation to eliminate hand-coding and other repetitive, time-intensive aspects of data infrastructure projects to deliver data warehouses, vaults, lakes and marts in days or weeks rather than in months or years. WhereScape has global operations in the USA, UK, Singapore and New Zealand.