

# WhereScape® Migration Express™ for Snowflake

**Fast, easy and low-risk migration to the cloud**

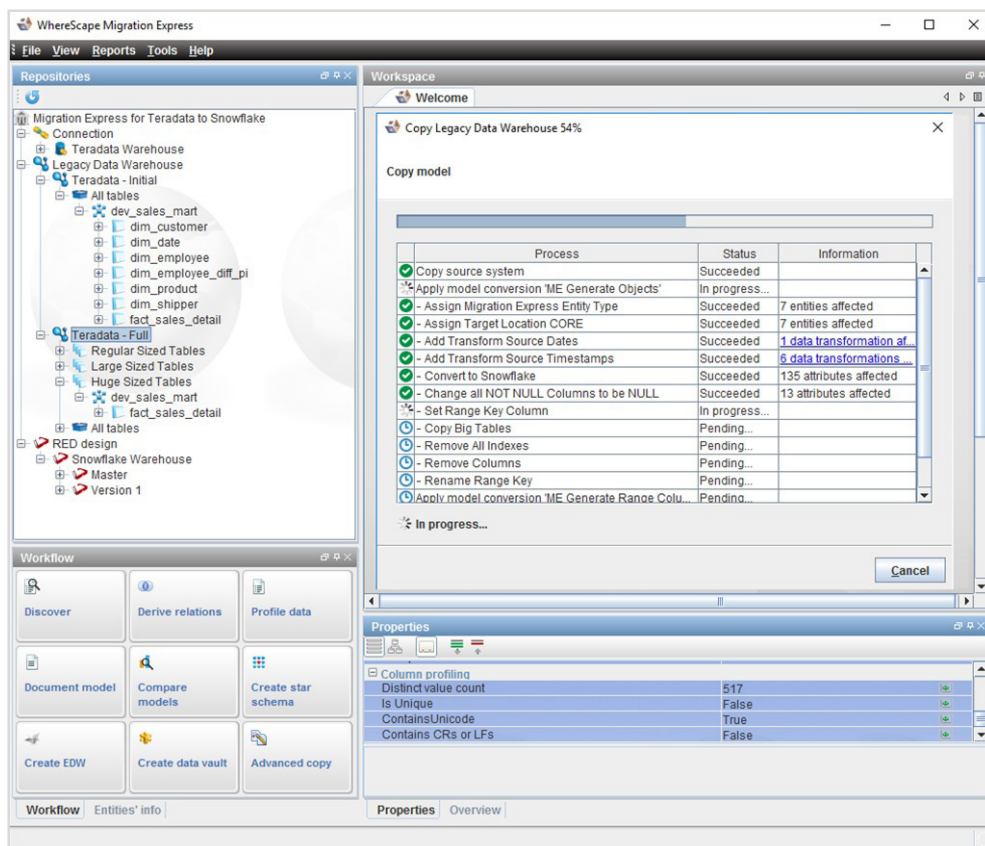
## The Advantages of Automation

- Easily migrate data infrastructure and data from legacy data platforms to Snowflake
- Move existing data warehouses, data vaults and data marts to the cloud quickly
- Reduce the complexity, effort and cost of migration projects
- Migrate entire data warehouses in a matter of days or weeks with a single developer
- Standardize migration processes and automatically validate data to reduce risk
- Deliver the benefits of Snowflake cloud data warehousing to your organization sooner

Moving to Snowflake, a data warehouse platform built for the cloud, is all about delivering data to the business faster, with better performance, elasticity, scalability, concurrency and simplicity. But for most organizations contemplating a move to the cloud, this isn't your first data warehousing effort. You have existing data and data infrastructure to consider and moving it to a new data platform can be a complex, time-consuming and expensive process.

Traditionally, migrating existing data warehouses to new environments has taken months, with a team of developers needed to discover and understand the existing data infrastructure, map it to the new data structure, write and test scripts, recreate metadata, and finally transfer and validate the data. Smart organizations are slashing project costs and months of effort by automating not only the design, development, deployment and operation of new data infrastructure, but the migration of existing data infrastructure as well.

Part of the WhereScape® automation for Snowflake offering, WhereScape® Migration Express™ for Snowflake automates the migration of existing data and data infrastructure to Snowflake, so that your organization can reap all the benefits of Snowflake cloud data warehousing sooner.



*WhereScape Migration Express for Snowflake automates the building of model conversion rules to quickly migrate existing data warehouses to Snowflake.*

## Features

### Automates migration to Snowflake

Out-of-the-box functionality migrates data infrastructure and data from Amazon Redshift, Greenplum, Microsoft SQL Server, Netezza, Oracle, Teradata, Vertica and other platforms.

### Takes the complexity out of migration

Import existing infrastructure metadata and use wizards to simplify development and data-mapping tasks.

### Discovers and profiles existing data

Automated, visual discovery and profiling tools help you quickly understand legacy data stores, warehouses and vaults.

### Converts existing data types

WhereScape handles all conversions of data types from your legacy data infrastructure into Snowflake data types.

### Detects and protects Unicode data

Unicode data is automatically detected and preserved.

### About WhereScape

WhereScape helps IT organizations of all sizes leverage automation to design, develop, deploy, and operate data infrastructure faster. More than 700 customers worldwide rely on WhereScape automation to eliminate hand-coding and other repetitive, time-intensive aspects of data infrastructure projects to deliver data warehouses, vaults, lakes and marts in days or weeks rather than in months or years. WhereScape has global operations in the USA, UK, Singapore and New Zealand.

### WhereScape.com

© Copyright 2018, WhereScape Software Ltd. All rights reserved. All trademarks, trade names, service marks and logos referenced herein belong to their respective companies.

08/2018

### Migrates everything you need

You can migrate schema, data, metadata, users, roles and grants to Snowflake automatically.

### Populates and validates data

Automatically populate tables in Snowflake and validate that all rows loaded are correct.

### Optimizes data transfer

Efficiently transfer data with advanced capabilities such as network optimization, heuristic algorithms for parallel transfers, restart functionality and a built-in scheduler.

### Jumpstarts ETL/ELT code rebuilding

Cuts the effort to rebuild ETL/ELT code in Snowflake to most fully leverage the platform and meet current business needs.

### Refreshes migrated data

Incrementally refresh your migrated data as you work through the migration period.