

## SPEEDING ANALYTICS SUCCESS WITH

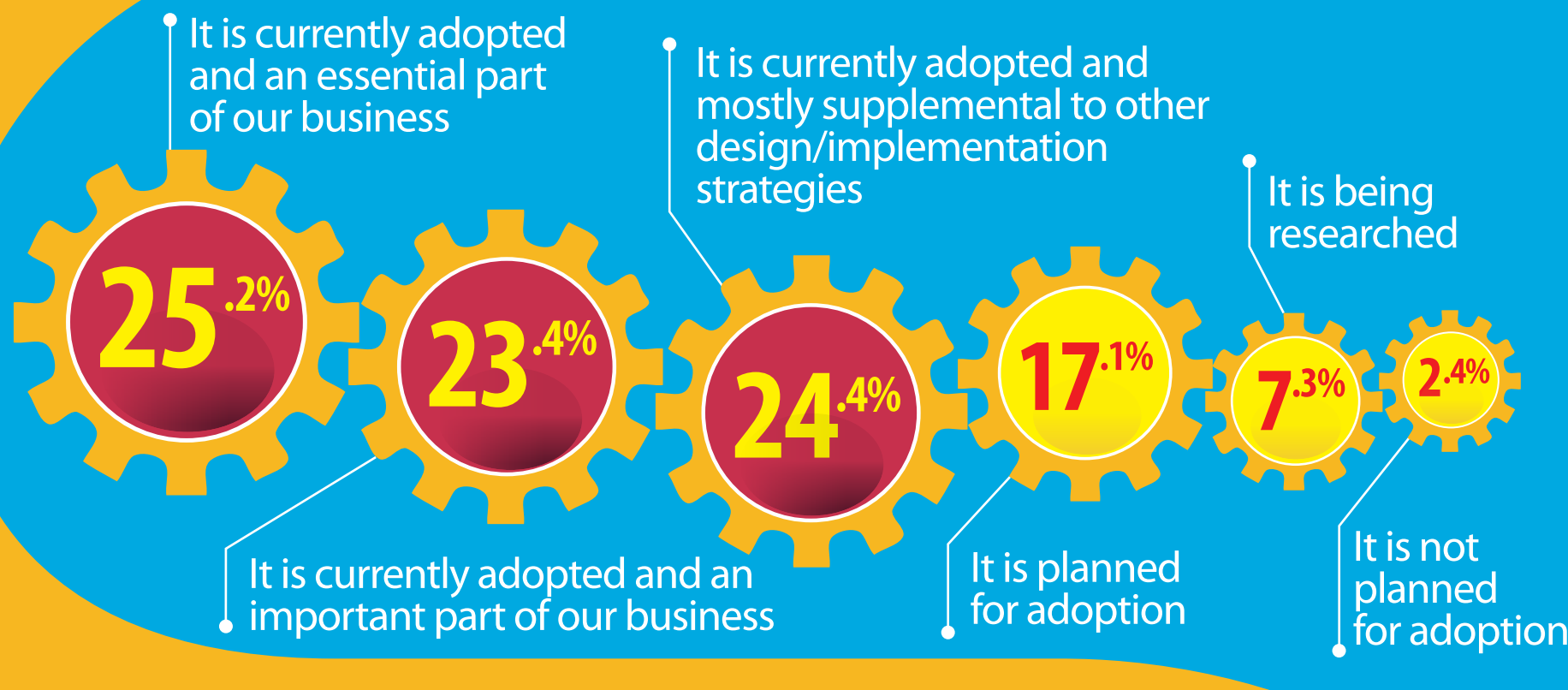
DATA WAREHOUSE  
AUTOMATION

**Automation** is taking root in the world of business intelligence and analytics.

Data warehouse automation (DWA) links together the design and implementation of analytical environments into repeatable processes. DWA leads to the increase in quality of data warehouses and data marts requiring less time to implement. Unfortunately, there is a perception among many organizations that DWA is not an option for them when it comes to implementing their analytical environments.

*Recent EMA end-user research revealed many companies successfully utilize automation for their analytical implementations.*

## Analytical Environment Automation Strategy



**75%**

Nearly 3 of 4 panel respondents indicate they are implementing automation practices with their analytical environments

**4x**

Respondents are 4 times more likely to have a plan to deal with risk associated with changing requirements via advanced DWA strategies

**2.5x**

Respondents are 2.5 times more likely to support weekly changes to their analytical environments utilizing advanced DWA strategies

Respondents have a 30% greater chance of a **Very Successful** project using advanced DWA practices than without

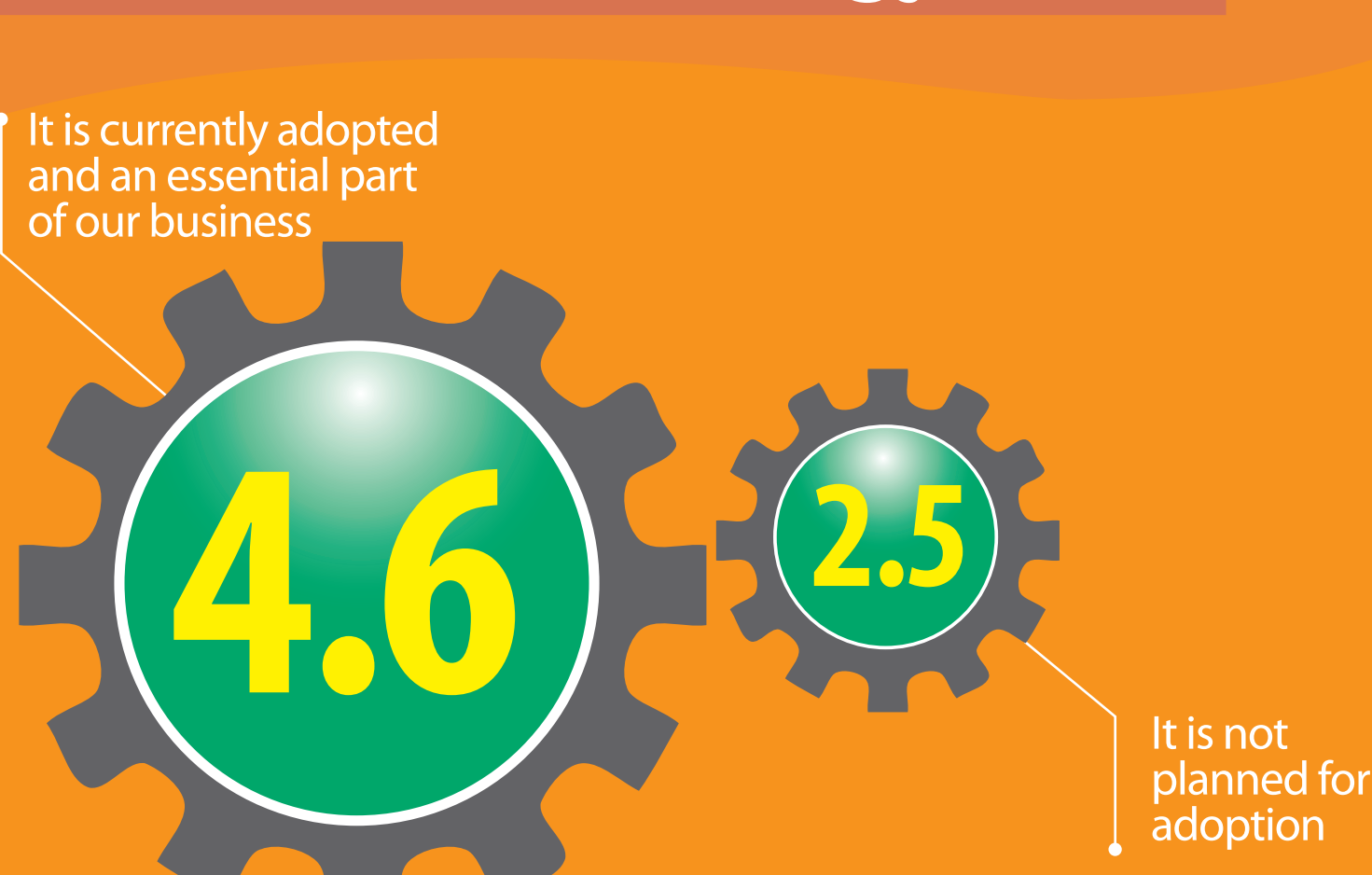
**30%**

Respondents experience nearly twice the project success using advanced DWA strategies, going from

**Very successful to Limited failure**

**2x**

## Average Project Success Score by Automation Strategy



With the right processes and cultural buy-in, DWA provides organizations the ability to boost the overall success of their analytical projects by properly leveraging their technical teams, reducing the implementation time, and supporting a higher frequency of change.

**WhereScape Enables Automated Data Warehouse Development**

**Time to value** from idea to information

Ongoing change management for the life of **Enterprise Data Warehouse**

**Automation reduces time and effort as it leverages software and metadata to eliminate hand coding and custom design**

**Automated Workflow**

**Self-generated technical and business documentation**

**Metadata Management**